

## Windsor Avenue Colliers Wood, SW19 2RR

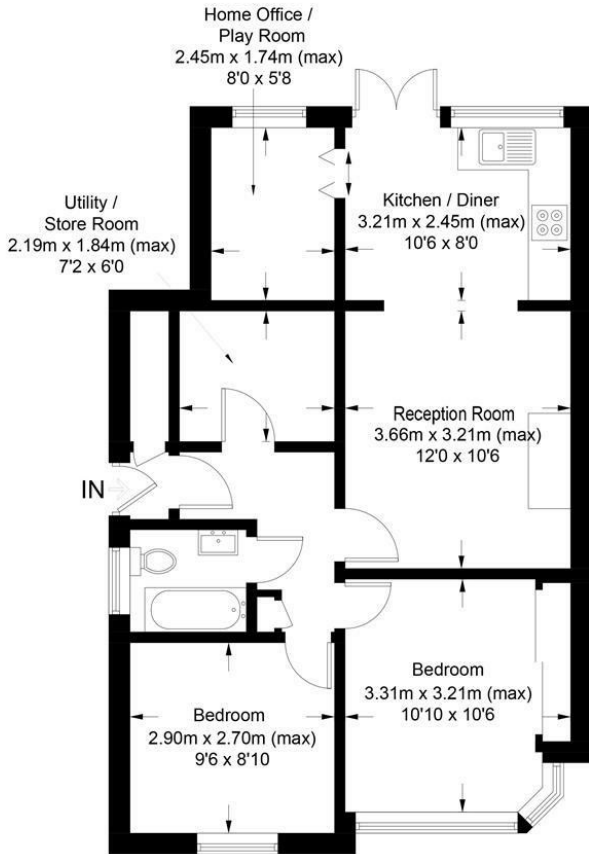
£425,000 Leasehold



**A well presented two double bedroom ground floor maisonette that has been extended to the rear to create a home that is larger than average for this sought after area close to Deen City Farm and Transport Links. Comprising of two double bedrooms, home office, spacious lounge, separate utility room, newly fitted bathroom, modern fitted kitchen with direct access to the secluded rear garden. Further benefits include a long lease, off street parking and the bonus of a large front garden, ideal for anyone who wants to entertain or has children.**

## Windsor Avenue, SW19

Approximate Gross Internal Area = 57.0 sq m / 614 sq ft

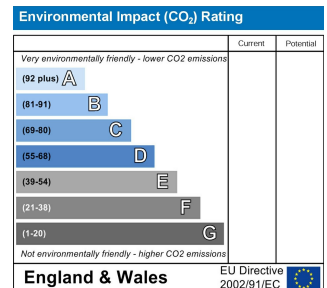
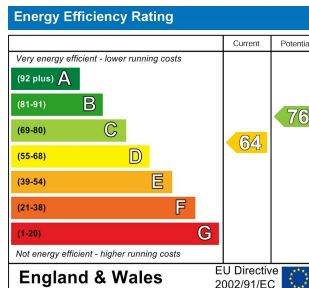


### Ground Floor

This floor plan is for representation purposes only and is not drawn to scale.  
**The Gross Internal Area includes outbuildings shown on the plan.**  
 Whilst every attempt has been made to ensure the accuracy of the plan measurements of doors, windows and rooms are approximate only and should be checked before making any decisions reliant upon them.  
 Copyright Bespokeplans.co.uk (ID794119)



- Ground Floor Maisonette
- Two Double Bedrooms
- Rear Extended
- Well Presented
- Off Street Parking
- Front & Rear Gardens
- EPC Rating : D
- Merton Council Tax Band C



For Free Mortgage Quote and Best Mortgage Rates, call an Ellisons Mortgage Advisor on 020 8544 0518



Although these particulars are believed to be correct, their accuracy is not guaranteed and they do not form part of any contract.

Celebrating 30 years of successful Sales and Lettings in Merton

